



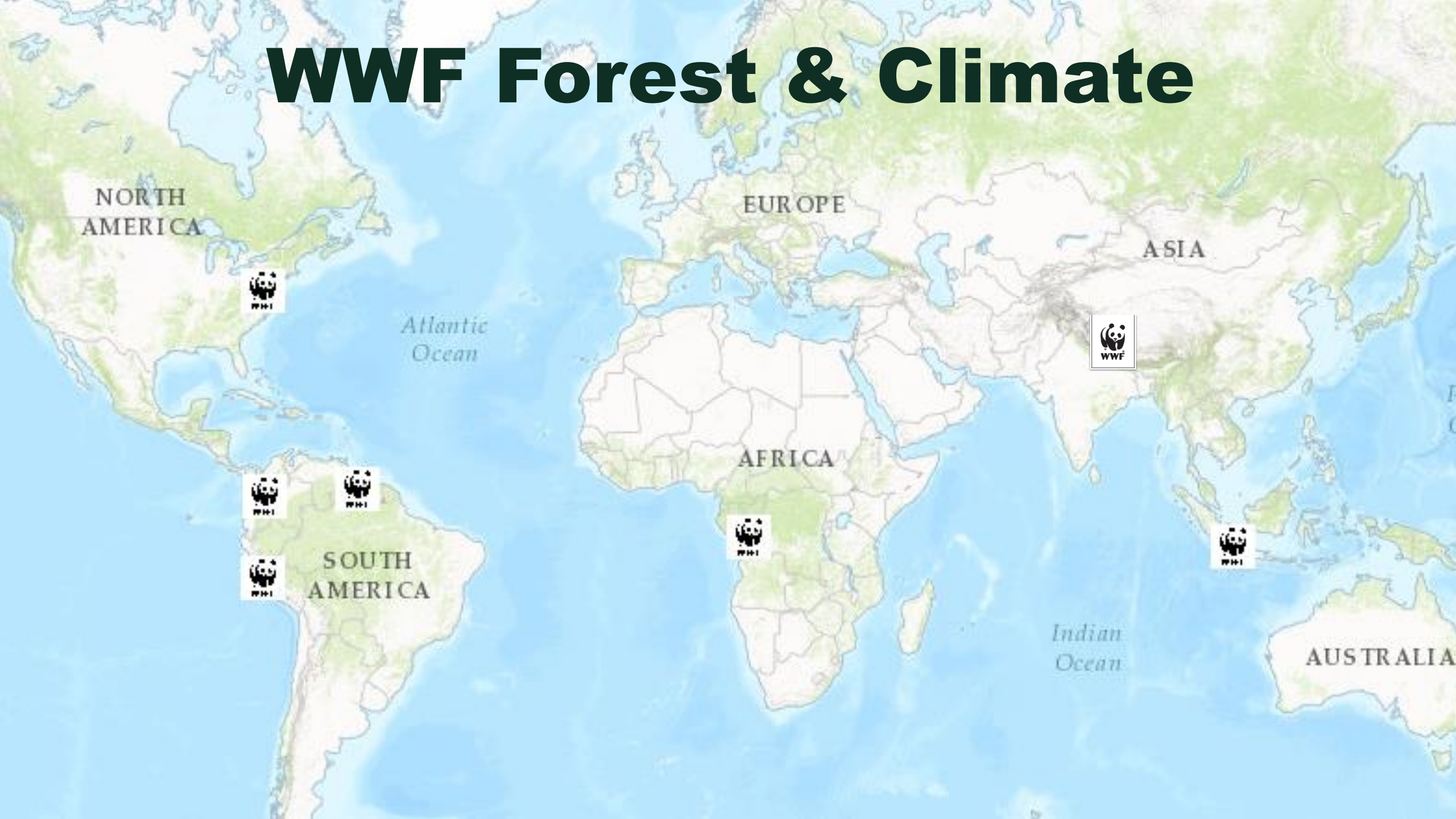
Coordinating REDD+ Support in Nepal and DRC

Karen Petersen (WWF-US) and Flory Botamba (WWF-DRC)

May 13, 2017



WWF Forest & Climate



NORTH AMERICA



Atlantic Ocean

EUROPE

ASIA



SOUTH AMERICA

AFRICA



Indian Ocean



AUSTRALIA

Strategies for Coordination

- Support local and regional governments to develop and implement REDD+ policies and link them to national and international programs
- Provide technical support to local communities and Indigenous Peoples to ensure they can participate in and benefit from REDD+, including support for measuring and monitoring forests, delineating community lands, and catalyzing access to climate finance
- Facilitate partnerships between relevant stakeholders, ranging from major funders to Indigenous Peoples and forest communities, to enhance the coordination of REDD+



Nepal: Overview

GOVERNMENT



DONORS



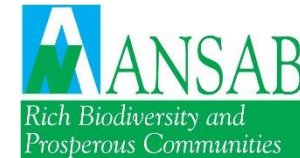
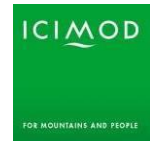
MULTILATERAL AGENCIES



INDIGENOUS PEOPLES & COMMUNITY GROUPS



NGOs





Nepal: Coordination

- The long-term vantage point of NGOs helps them to identify synergies among different programs and REDD-related activities
- Encouraging robust multi-stakeholder consultation processes to inform various REDD+ activities optimizes the cumulative “long-view” of all civil society and Indigenous Peoples organizations

DRC: Overview

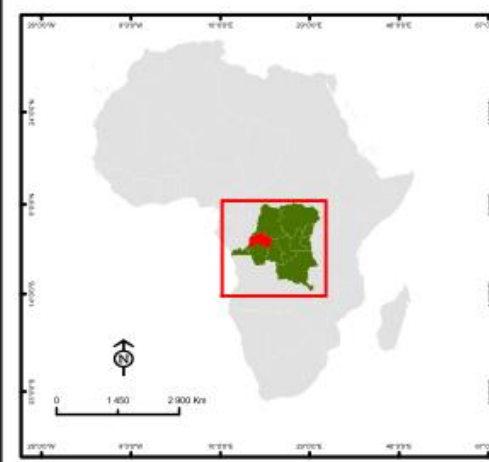
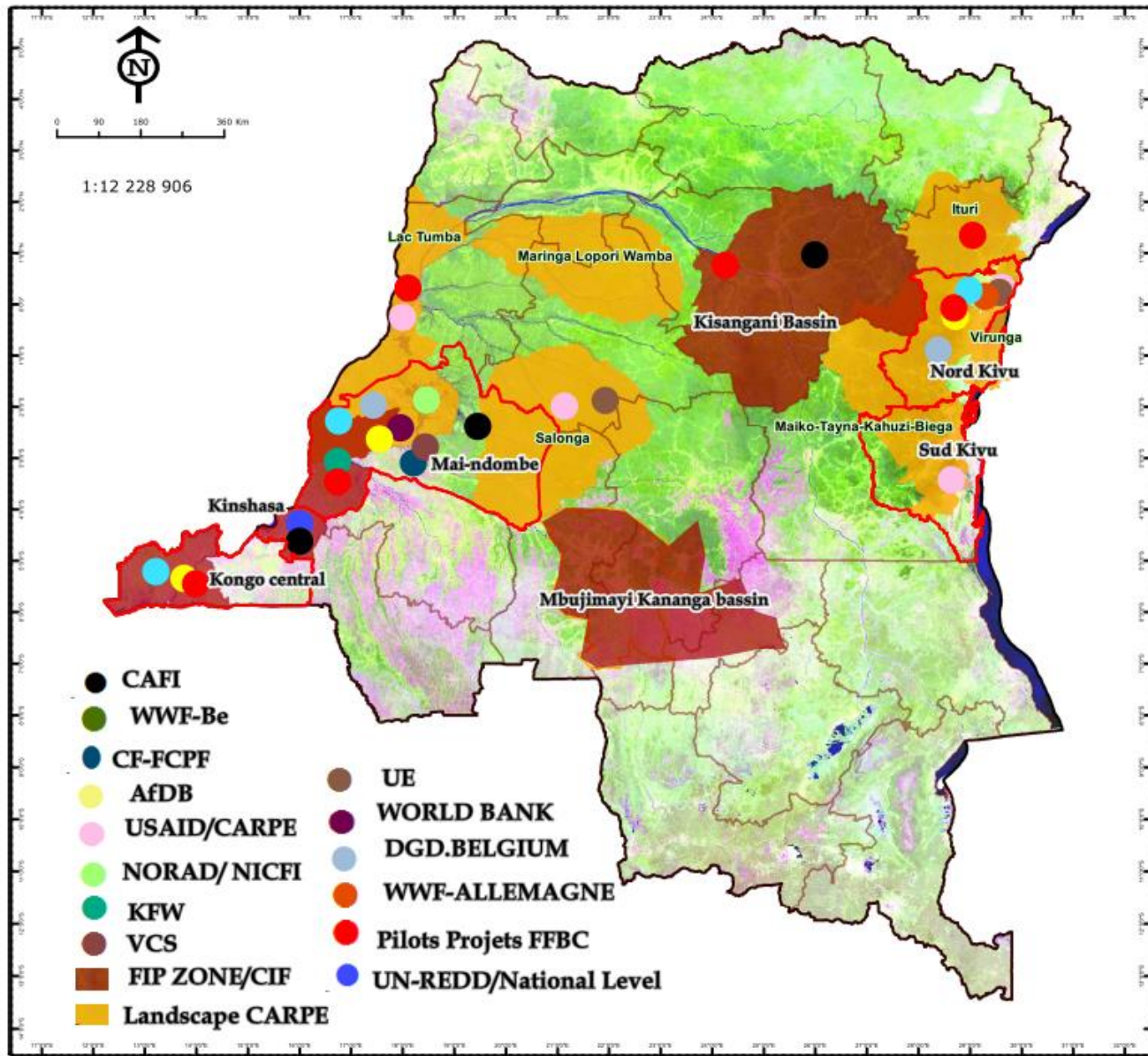
1. **Forestry Code of 29 August 2002**
2. **Priority Agenda: World Bank / Don IDA**
 - a. ***Moratorium***: The granting of new guarantees of timber supply and letters of intent as well as their renewal or extension are suspended
 - the moratorium put in place in 2002 on allowances by mutual agreement and renewed by Presidential decree on 2005 (15 years/ 14 May)
 - the cancellation of 25 million hectares of concessions on non-inventoried forest, abandoned and/or not valued in 2002
 - b. ***Legal review of forest concessions (156) 2007 – 2009***
 - c. ***Transparency***
3. **Congo Basin Forest Partnership Project, CBFP**: Support to the implementation of the Plan of convergence of the COMIFAC and the Yaoundé Declaration
4. **Governance body** in place (CNREDD, National REDD+ Committee, Interministerial Committee): 2009

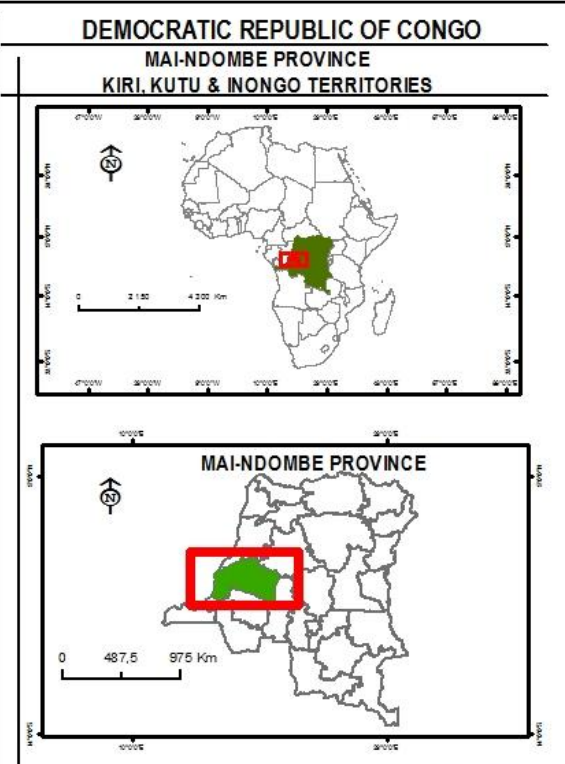
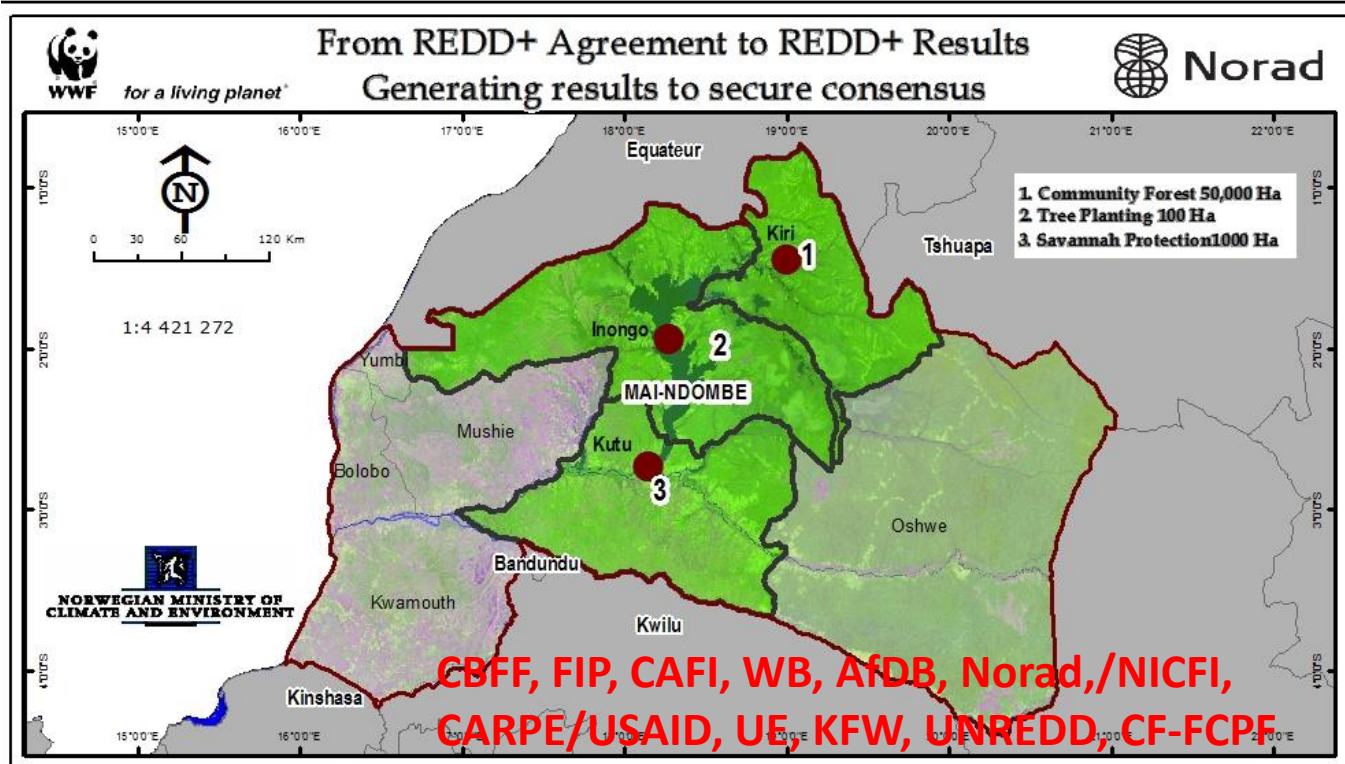


Principle 5: Fair & Effective Funding

	Background	Phase 1	Phase 2	Phase 3
Activities	2002-2009: Legal framework (Forestry code, Priority Agenda, Moratorium, logging concession)	2010 – 2013 Production of REDD+ tools: RPP, National REDD+ Framework Strategy, REDD+ National Fund,	2011-2016 FIP Investment Plan. The REDD+ National Investment Plan (CAFI)	2015- ERPIN/ERPD
Pilot Projects -Programs	Forestry Code and its implementation texts, PFCN, CBFP (forest zoning process)	6 integrated REDD+ Projects, Carbon Mapping & Model (Lidar)	3 Pilot Pools of supply: Kinshasa, Kisangani and Mbuji-Mayi & Kananga (PIREDD)	ERPIN/ERPD Mai-Ndombe – ERPA
Funds	WB, National Government, CBFP- CARPE/USAID	UN-REDD, Readiness Fund, Norad, KFW/WWF-Ge, WWF-Fr, WWF-be	CIF, Norad/NICFI, KFW	CF-FCPF, EU, CAFI, Norad
Private sector	FIB	FIB, Carbon Private sector, artisanal	FIB, Carbon, agriculture, cattle ranching private sector	FIB, Carbon private sector, agriculture, cattle ranching
Civil Society	CRON/RRN/ IPLC	CRON/GTCR/REPALEF/IPLC	GTCRR/REPALEF/IPLC	GTCRR/REPALEF/IPLC







Main Activities	Level
<ul style="list-style-type: none"> FPIC (Full Sensitization and written Consent) Effective participation of all S/H Participatory mapping of IPLC lands Provincial Governance Entities: Provincial Steering Committee, Provincial Advisory Council of Forests Local Governance Entities: CLD PES: Community Forest Management, Reforestation and Savannah protection REDD+ Safeguards Gender Lesson learned & Knowledge Sharing 	<ul style="list-style-type: none"> Province and local National, Province and local Local Province Local Local Province, local Local, Province, National & International





Together with the children of Mai-Ndombe, we say:
Thank you, Merci, Matondo, Asante, Tuasakidila, Danke

