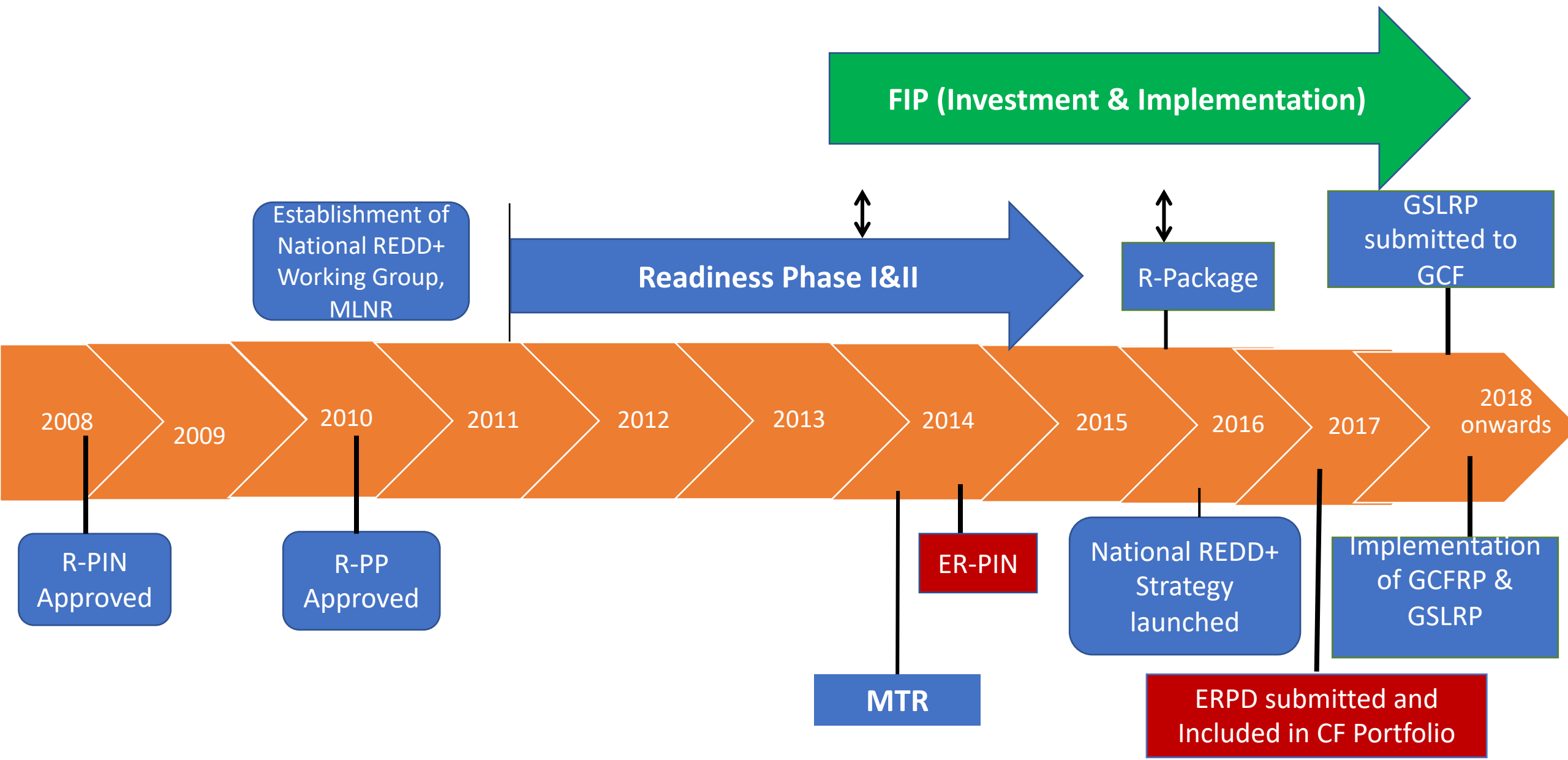


# Ghana's REDD+ Trajectory



# REDD+ Strategic Programs

Ghana Cocoa  
Forest REDD+  
ER Program  
(GCFRP)



Coastal Mangroves  
REDD+ ER program



Ghana Shea  
Landscape  
REDD+ ER  
Program  
(GSLRP)



Togo-Plateau  
REDD+ ER Program



Transition Zone  
REDD+ ER  
Program

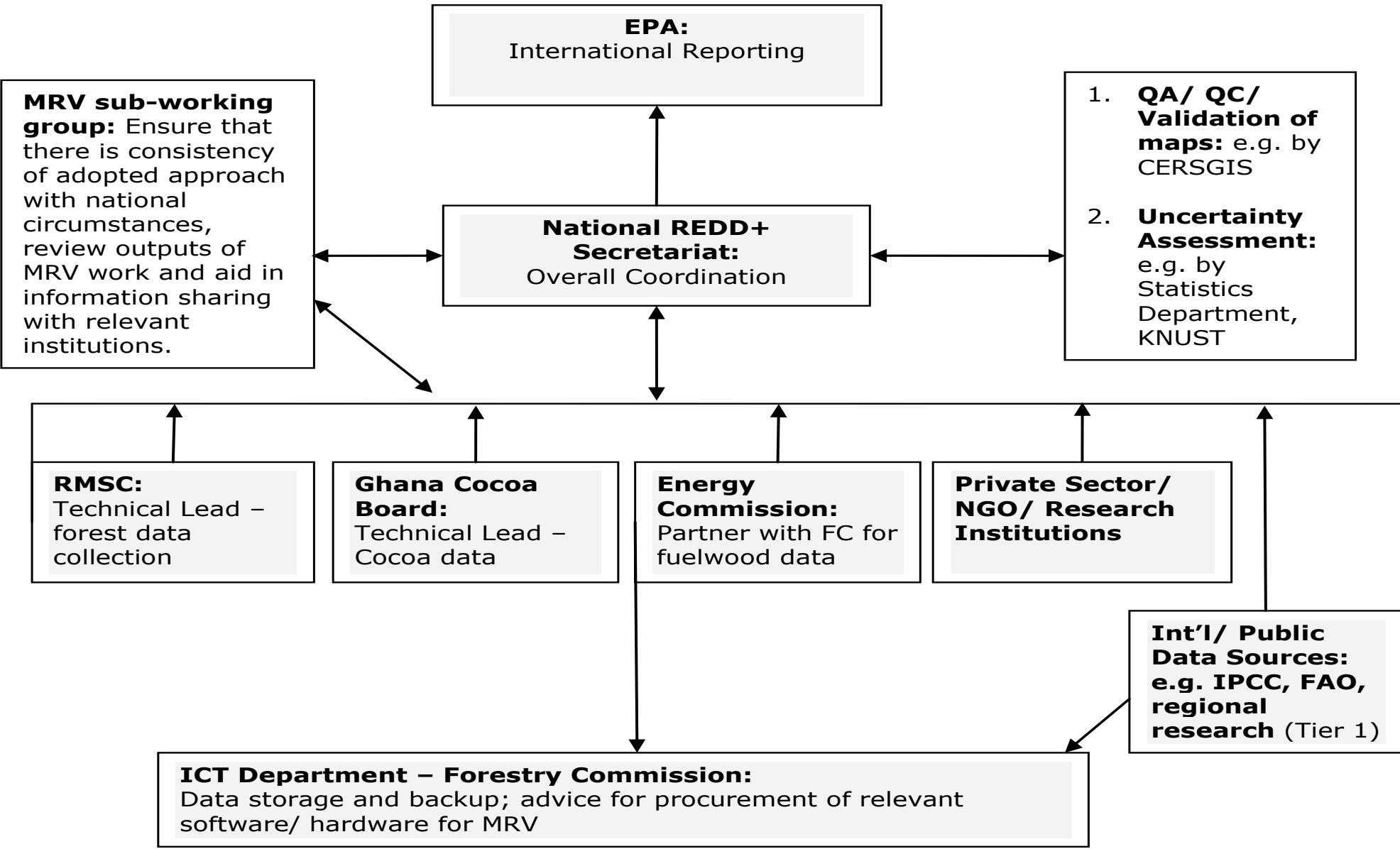


# Forest Reference Level

- Draft FRL submitted to UNFCCC in January, 2017 covering deforestation, degradation and carbon stocks enhancements;
- Technical Assessment Undertaken by UNFCCC with support from the Coalition for Rainforest Nations from June, 2017;
- Technical Assessment Report published with FRL in August, 2018;
- Ghana believes the FRL needs to be revised in a stepwise approach as the country obtains better data;
- Historic emissions from Forestry sector is quoted at about 66MTCO<sub>2</sub>e with the highest source being deforestation due to Agricultural Expansion.
- **FRL did not cover all areas for the IPCC Completeness Criteria**



# REDD+ MRV Institutional Framework





# National Forest Monitoring System

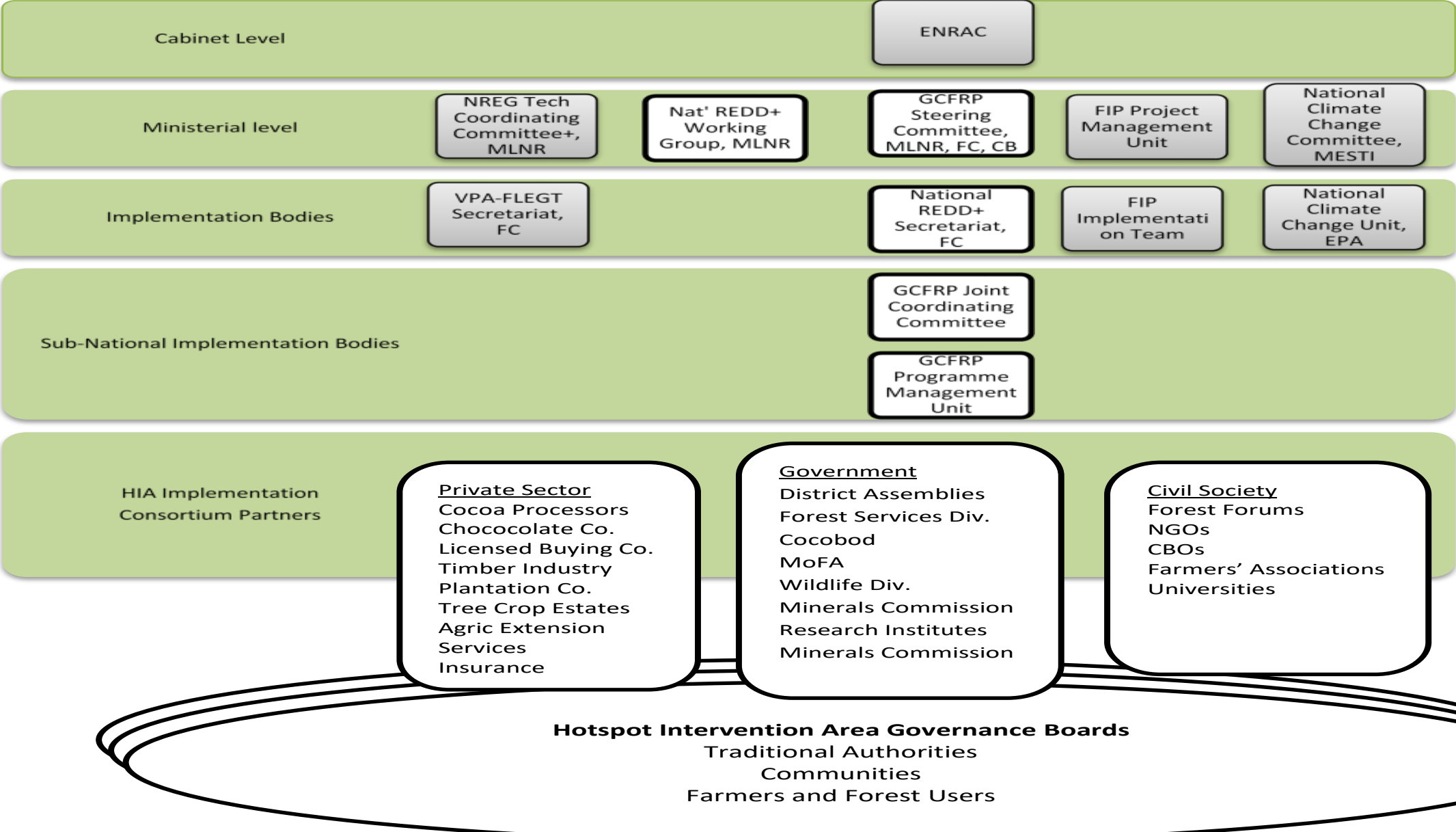
- Ghana's NFMS (yet to be functional) will cater for all its REDD+ Measurement Reporting and Verification (MRV) needs;
- A Framework Document has been developed on how the Country would ensure periodic Forest Monitoring. This includes:
  - Forest Inventory to include both Flora and Fauna
  - Infrastructure and Personnel for real time Forest Monitoring
  - Periodic and Regular Development of Land-use and Landcover maps (Country has five maps already, 1990, 2000, 2010, 2012 and 2015)
  - Periodic and Regular Socio-Economic data collection for Forest Fringe Communities
- Development of Standard Operating Procedures for determining emissions for drivers of D&D;

# Safeguards Information System

- Based on REDD+ PAMs in the Strategy, Principles, Criteria and Indicators for addressing and respecting Safeguards (Cancun, Donor, National) are being developed;
- 13 Principles, 54 Criteria and 136 Indicators developed as a draft, going through national harmonization;
- Ghana has adopted the Country Approach to Safeguards to develop holistic Safeguards requirements and instruments that address multiple needs;
- Legal Analysis of Cancun Safeguards and World Bank Operational Policies undertaken;
- Clarification of Legal Analysis Undertaken;
- Identification of Data Sources and Needs for SIS undertaken;
- Online SIS platform designed and hosted to receive information;
- Summary of Information (SOI) submitted in 2019 to UNFCCC;
- Work on Safeguards jointly supported by the FCPF, UNREDD, SNV and Climate Law and Policy.



# Overall Institutional Arrangements





# REDD+ In National Processes

- Contribute to the GHGI, BUR and National Communications reporting as part of the AFOLU sub-working Group
- REDD+ anchored in Nationally Determined Contributions
- REDD+ in Forest and Wildlife Policy 2012 and Climate Change Policy 2012
- REDD+ office now set up as a full Directorate within the existing Framework of the Forestry Commission

# Support

- FCPF
- UNREDD
- CfRN
- National Government
- Host of Other Bilateral support from NGOs, Private Sector Companies